

SAMPLE RETURN BOX



TASSO ONDEMAND
EXPAND VIRTUAL CARE

THE TASSO-SST ONDEMAND DEVICE

Patient-centric sampling kits for anytime, anywhere blood serum data



ACCURATE ANALYTICS

Whole blood prepared without anticoagulation allows immediate separation of serum for antibody and other testing.



PATIENT-CENTRIC SAMPLING

Adults and children can successfully collect blood samples at home, without exposure to a lab or mobile phlebotomist.



SEAMLESS WORKFLOWS

Easy shipping via standard post and options to offload logistics make it easy to integrate remote sampling into your workflow.

For more information visit www.tassoinc.com

© 2021 Tasso, Inc. All Rights Reserved.

TECHNICAL SPECIFICATIONS

Indication for Use: TASSO-SST is a single use blood collection device that is intended for the self-collection of capillary blood from people ages 3 months and older. The sample is shipped back to a laboratory for analysis of SARA-CoV-2 IgG antibodies with the Euroimmun assay.

Sample Type: Serum with a separator gel

Blood Collection Volume: 200-300uL

Blood Collection Anti-Coagulant: none (gold)

Collection Time: 5 or fewer minutes

Kit Size and Weight: 6.75x4x1.4in/17x10x3.5cm, 3.4oz/100g

Shipping: Sample ships in UN3373 compliant packaging via standard post such as USPS.

Barcoding: Each device, primary package and kit may be labeled with unique manufacturer's barcode.

Device Storage: 15-30° C (59-86° F)

Shelf Life: 6 months

Manufacturing: Assembled in the USA

Availability: For investigational use only (IUO).

SAFETY CERTIFICATIONS

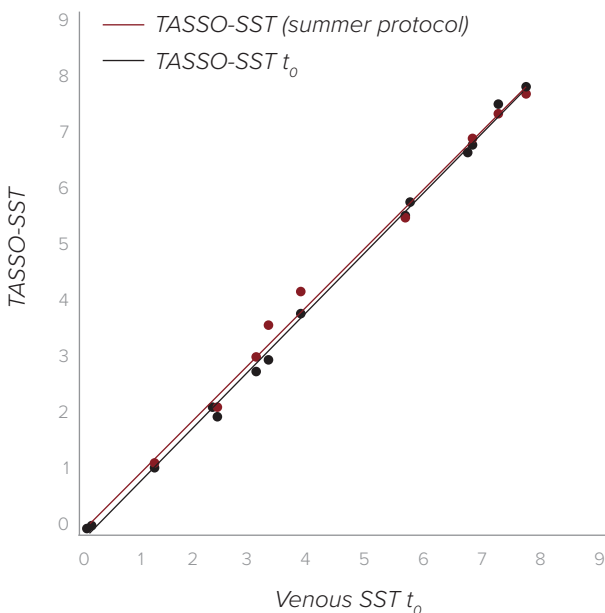
Biocompatibility: ANSI AAMI ISO 10993

Sterilization: ANSI AAMI ISO 11137, ANSI AAMI ISO 11607

EQUIVALENCY DATA

This data was collected by an independent site for investigational purposes and is not reviewed by the FDA.

Euroimmun Anti-SARS-CoV-2 ELISA (IgG) OD Ratio Measure



KIT JOURNEY



Patient receives off-the-shelf kit containing all supplies for sample collection and return.



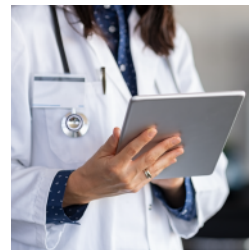
Patient collects sample at home.



Patient returns sample in provided packaging with pre-affixed return label.



Lab receives sample and runs analyses.



Data provided to the prescribing physician for review.