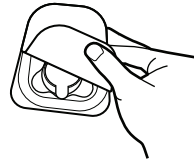


PACKAGE INSERT INSTRUCTIONS FOR USE



1. Wash hands before use. Healthcare workers must wear gloves during collection.



2. Remove device from tray.



3. Twist off cap from compatible tube.



4. With fill lines facing out, press tube into device until snug.



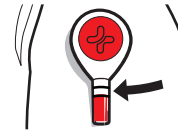
5. Peel tab away from red button.



6. Remove clear cover from red button.



7. Prepare shoulder. Stick device to clean shoulder and press button to start collection.



8. Allow tube to fill for 5 minutes. Remove device if blood reaches top fill line before time is up.



9. Remove device by peeling from one side.



10. Remove tube from button with a slight twist and pull down.



11. Snap cap fully onto the tube. Mix per manufacturer's labeling.

Contact us for help:
+1 800-257-2370

TRANSLATED INSTRUCTIONS

- The Tasso+ instructions for use and translations can be found on the Tasso website:
- Die Gebrauchsanweisung und die Übersetzungen von Tasso+ finden Sie auf der Tasso-Website:
- Las instrucciones de uso de Tasso+ y las traducciones se pueden encontrar en el sitio web de Tasso:
- Le istruzioni per l'uso e le traduzioni di Tasso+ sono disponibili sul sito Web di Tasso:
- La notice d'utilisation du Tasso+ et des versions traduites sont disponibles sur le site Web de Tasso :
- De gebruiksaanwijzing voor de Tasso+ en vertalingen zijn te vinden op de Tasso-website:
- Instruktionerna för användning och översättningar tillhörande Tasso+ finns på Tassos webbplats:
- A Tasso+ használati utasítása és annak fordításai megtalálhatók a Tasso weboldalon:
- Návod na použitie a preklady Tasso+ nájdete na webovej stránke spoločnosti Tasso:
- Tasso+-brugsanvisninger og -oversættelser findes på Tassos websted:
- Tasso+-bruksanvisningen og -oversættelser finnes på Tasso-nettstedet:
- Tasso+ -käyttöohjeet ja käännökset löytyvät Tasson verkkosivuilta:

<https://www.tassoinc.com/eu/tassoplus-ifu>

INTENDED PURPOSE

Allows self-collection of a capillary blood sample in conjunction with a compatible sample collection reservoir.

MATERIALS PROVIDED

Each tray contains one Tasso+ device.

DISPOSAL

Follow local guidelines for discarding used or defective sharps as a biohazard material.

MATERIALS REQUIRED (Not provided)

- Compatible tube, refer to manufacturer's labeling
- Gloves (for Healthcare Providers)
- Alcohol swab
- Bandage
- Heat pack or other arm warming method

WARNINGS

- Prescription use only.
- Single use only.
- Do not resterilize.
- Do not use if device packaging has been opened or damaged.
- Keep out of reach of children.
- Minor bruising or residual marks may occur at the sample collection site.
- Do not use after expiration date.
- Intended for self-use or use by a healthcare provider.
- Use while seated as fainting may occur with any blood sampling procedure.
- Not for use on infant heels.
- Users must validate use of product for their specific diagnostic assay.
- For external use only.

Any serious incident that has occurred in relation to the device should be reported to the manufacturer, the authorized representative, and the competent authority of the Member State in which the user and/or patient is established.

SYMBOLS

- | | | | |
|-----|------------------------|---|----------------------------------|
| REF | Catalog number | i | Consult instructions for use |
| LOT | Lot number | ! | This device contains sharps |
| | Use by date | | Do not use if package is damaged |
| | Single use only | | Prescription use only |
| | Store at 18-28°C | | Sterilized by irradiation |
| | Transport at 25-85% RH | | Do not resterilize |
| | CE Mark | | Medical Device |
| | Importer | | |